

# Cheese Stuffed **Bosco** Stick

Contains 1 Bosco Stick

## Nutrition Facts

1 serving per container

**Serving size 1 piece (85g)**

Amount per serving

**Calories 240**

% Daily Value\*

**Total Fat 9g 12%**

Saturated Fat 4g 20%

**Cholesterol 15mg 5%**

**Sodium 330mg 14%**

**Total Carbohydrate 27g 10%**

Dietary Fiber 7g 4%

Sugars 1g

**Protein 12g**

Vitamin D 10%

Calcium 15%

Potassium 2%

Iron 10%

The % Daily Value (DV) tells you how much a nutrient in a serving of food contributes to a daily diet. 2,000 calories a day is used for general nutrition advice.

**INGREDIENTS:** CRUST: FLOUR BLEND (ENRICHED WHEAT FLOUR (WHEAT FLOUR, NIACIN, REDUCED IRON, THIAMIN MONONITRATE, RIBOFLAVIN, ENZYME, FOLIC ACID), WHOLE WHEAT FLOUR), WATER, SUGAR, CORN OIL, SALT, YEAST, SORBITAN MONOSTEARATE. CHEESE: MOZZARELLA CHEESE (PASTEURIZED PART SKIM MILK, CHEESE CULTURE, SALT, ENZYMES). TOPPING: MARGARINE (NATURAL OIL BLEND (SOYBEAN, PALM FRUIT AND CANOLA OILS), WATER, SALT, MONO AND DIGLYCERIDES, POTASSIUM SORBATE, NATURAL BUTTER TYPE FLAVOR (SOYBEAN OIL, NATURAL FLAVORS), ARTIFICIAL BUTTER FLAVOR (SOYBEAN OIL, ARTIFICIAL FLAVORS), LACTIC ACID, VITAMIN A PALMITATE AND BETA-CAROTENE). TOPPING WITH CHEESE: PARMESAN CHEESE [(PASTEURIZED PART-SKIM MILK, CHEESE CULTURES, SALT, ENZYMES), POWDERED CELLULOSE (ADDED TO PREVENT CAKING)], POTASSIUM SORBATE (ADDED TO PROTECT FLAVOR)], CORN STARCH, SALT, DEHYDRATED GARLIC, NOT MORE THAN 2% SILICON DIOXIDE (ANTI-CAKING AGENT).  
**CONTAINS: WHEAT, MILK**

Distributed by:  
Holiday Stationstores, LLC  
Minneapolis, MN 55437  
holidaystationstores.com



7 21931 00016 6

# Buffalo Chicken Tenderstix

Contains 1 Tenderstix

## Nutrition Facts

1 serving per container

**Serving size 1 piece (85g)**

Amount per serving

**Calories 180**

% Daily Value\*

**Total Fat** 8g **12%**

Saturated Fat 2.5g **13%**

**Cholesterol** 40mg **13%**

**Sodium** 610mg **25%**

**Total Carbohydrate** 12g **4%**

Dietary Fiber 0g **0%**

Sugars 2g

**Protein** 14g

Vitamin A 0%

Calcium 10%

Vitamin C 4%

Iron 6%

The % Daily Value (DV) tells you how much a nutrient in a serving of food contributes to a daily diet. 2,000 calories a day is used for general nutrition advice.

**INGREDIENTS:** CHICKEN, BREADING (WHEAT ENRICHED AND BLEACHED ENRICHED FLOUR (WHEAT FLOUR, NIACIN, REDUCED IRON, THIAMINE MONONITRATE, RIBOFLAVIN, FOLIC ACID), SALT, DEXTRIN, MODIFIED FOOD STARCH, SUGAR, NATURAL FLAVORS, SOYBEAN OIL, YEAST, SPICE, LEAVENING (SODIUM ACID PYROPHOSPHATE, SODIUM BICARBONATE, MONOCALCIUM PHOSPHATE), GUAR GUM, XANTHAN GUM), WATER, PASTEURIZED PROCESS SWISS CHEESE (SWISS CHEESE (MILK, CHEESE CULTURES, SALT, ENZYMES), WATER, CREAM, SODIUM PHOSPHATE, SALT, SORBIC ACID (PRESERVATIVE), COLOR ADDED), SOYBEAN OIL, CAYENNE PEPPER, LESS THAN 2% OF: CORN SYRUP SOLIDS, CITRIC ACID, DEXTROSE, DISTILLED VINEGAR, GARLIC POWDER, GROUND RED PEPPER, GUM, GUAR, HYDROLYZED SOY & WHEAT PROTEIN, MALTODEXTRIN, MILK, MODIFIED CORNSTARCH, NATURAL FLAVORS, NONFAT MILK SOLIDS, ONION POWDER, POTASSIUM SORBATE AND SODIUM BENZOATE (PRESERVATIVES), SALT, SODIUM PHOSPHATE, SOY PROTEIN ISOLATE, WHEY, XANTHAN GUM  
**CONTAINS: MILK, SOY, WHEAT**

Distributed by:  
Holiday Stationstores, LLC  
Minneapolis, MN 55437  
holidaystationstores.com



# Cheesy Pepper Jack Taquito

Contains 1 Taquito

## Nutrition Facts

1 serving per container

Serving size 1 piece (85g)

Amount per serving

**Calories 200**

% Daily Value\*

|                               |            |
|-------------------------------|------------|
| <b>Total Fat</b> 9g           | <b>12%</b> |
| Saturated Fat 3.5g            | <b>18%</b> |
| <b>Cholesterol</b> 10mg       | <b>3%</b>  |
| <b>Sodium</b> 380mg           | <b>17%</b> |
| <b>Total Carbohydrate</b> 23g | <b>8%</b>  |
| Dietary Fiber 1g              | <b>4%</b>  |
| Sugars 1g                     |            |
| <b>Protein</b> 6g             |            |
| Vitamin D                     | 0%         |
| Calcium                       | 6%         |
| Iron                          | 6%         |
| Potassium                     | 0%         |

\*The % Daily Value (DV) tells you how much a nutrient in a serving of food contributes to a daily diet. 2,000 calories a day is used for general nutrition advice.

**INGREDIENTS:** WHEAT FLOUR (ENRICHED WITH NIACIN, REDUCED IRON, THIAMIN MONONITRATE, RIBOFLAVIN, FOLIC ACID), WATER, NEUFCHATEL CHEESE PRODUCT (MILK, NEUFCHATEL CHEESE (MILK, CREAM, BACTERIAL CULTURE), SKIM MILK, PALM OIL, MILK PROTEIN CONCENTRATE, BACTERIAL CULTURE, SALT, CAROB BEAN GUM, LACTIC ACID, MONO AND DIGLYCERIDES, CITRIC ACID, APO-CAROTENAL), PROCESSED MONTEREY JACK AND AMERICAN CHEESE BLEND WITH PEPPERS (MONTEREY JACK AND AMERICAN CHEESES (MILK, BACTERIAL CULTURE, SALT, MICROBIAL ENZYME), WATER, SKIM MILK, PALM OIL, SODIUM PHOSPHATES, MODIFIED CORNSTARCH, RED AND GREEN BELL AND JALAPENO PEPPERS, SALT, LACTIC ACID), ROASTED BELL PEPPERS (WITH SALT, CITRIC ACID), VEGETABLE OIL (SOYBEAN AND/OR CANOLA AND/OR CORN OIL), BATTER MIX (ENRICHED WHEAT FLOUR (ENRICHED WITH NIACIN, REDUCED IRON, THIAMINE MONONITRATE, RIBOFLAVIN, FOLIC ACID), YELLOW CORN FLOUR, SPICES, SALT, JALAPENO PEPPER, BAKING POWDER, GUAR GUM, OLEORESIN PAPRIKA AND TURMERIC, NATURAL FLAVOR), JALAPENO PEPPER (WITH SALT, ACETIC ACID, CALCIUM CHLORIDE), MODIFIED CORN STARCH, MALTODEXTRIN, DEXTROSE, SALT, LACTIC ACID, XANTHAN GUM, DOUGH CONDITIONERS (YEAST, WHEAT GLUTEN, SUGAR, GUAR GUM, MODIFIED POTATO STARCH, SODIUM METABISULPHITE).  
**CONTAINS: WHEAT, MILK**

Distributed by:

Holiday Stationstores, LLC

Minneapolis, MN 55437

holidaystationstores.com



# French Toast & Sausage Taquito

Contains 1 Taquito

## Nutrition Facts

1 serving per container

Serving size 1 piece (85g)

Amount per serving

**Calories 190**

% Daily Value\*

**Total Fat** 9g 14%

Saturated Fat 2g 10%

**Cholesterol** 25mg 8%

**Sodium** 400mg 17%

**Total Carbohydrate** 22g 7%

Dietary Fiber 1g 4%

Sugars 1g

**Protein** 14g

Vitamin A 0%

Calcium 4%

Vitamin C 0%

Iron 10%

The % Daily Value (DV) tells you how much a nutrient in a serving of food contributes to a daily diet. 2,000 calories a day is used for general nutrition advice.

**INGREDIENTS:** FULLY COOKED MAPLE SAUSAGE LINK, MADE WITH MECHANICALLY SEPARATED TURKEY, BHA, BHT AND CITRIC ACID ADDED TO HELP PROTECT FLAVOR (MECHANICALLY SEPARATED TURKEY, WATER, SOY PROTEIN CONCENTRATE, CONTAINS 2% OR LESS OF: SUGAR, SALT, SPICES, DEXTROSE, BROWN SUGAR, DEHYDRATED PORK STOCK (PORK STOCK, NATURAL FLAVOR), MAPLE SUGAR, SEASONING (GLUCOSE, CARAMEL COLOR, CORN SYRUP, PURE MAPLE SYRUP), CITRIC ACID, BHA, BHT), WATER, WHEAT FLOUR (ENRICHED WITH NIACIN, REDUCED IRON, THIAMIN MONONITRATE, RIBOFLAVIN, FOLIC ACID), VEGETABLE OIL (SOYBEAN, SUNFLOWER, CANOLA AND/OR CORN OIL), BATTER MIX (WHEAT FLOUR, YELLOW CORN FLOUR, DEXTROSE, CORNSTARCH, SUGAR, TAPIOCA DEXTRIN, EGGS, NONFAT MILK, LEAVENING (SODIUM ALUMINUM PHOSPHATE, SODIUM BICARBONATE), SALT, MODIFIED FOOD STARCH, NATURAL AND ARTIFICIAL FLAVORS, SPICE, SUCRALOSE, GUAR GUM, MAPLE SYRUP, BROWN SUGAR MOLASSES), MALTODEXTRIN, TORTILLA FLOUR BLEND (SALT, RICE FLOUR, GUAR GUM, WHEAT, SODIUM BICARBONATE, CORN STARCH, WHEAT STARCH, FOOD STARCH, DOUGH CONDITIONERS (SODIUM METABISULFITE, SODIUM STEAROYL LACTYLATE, L-CYSTEINE, MONO AND DIGLYCERIDES, DICALCIUM PHOSPHATE), MICROCRYSTALLINE CELLULOSE, SILICON DIOXIDE (TO PREVENT CAKING)), DEXTROSE.  
**CONTAINS: WHEAT, MILK, SOY, EGGS**

Distributed by:

Holiday Stationstores, LLC

Minneapolis, MN 55437

holidaystationstores.com



# Pepperoni Pizza Taquito

Contains 1 Taquito

## Nutrition Facts

1 serving per container

Serving size 1 piece (85g)

Amount per serving

**Calories 210**

% Daily Value\*

|                               |            |
|-------------------------------|------------|
| <b>Total Fat</b> 10g          | <b>15%</b> |
| Saturated Fat 3g              | <b>15%</b> |
| <b>Cholesterol</b> 15mg       | <b>5%</b>  |
| <b>Sodium</b> 330mg           | <b>14%</b> |
| <b>Total Carbohydrate</b> 23g | <b>8%</b>  |
| Dietary Fiber 1g              | <b>4%</b>  |
| Sugars 2g                     |            |
| <b>Protein</b> 7g             |            |
| Vitamin A                     | 6%         |
| Calcium                       | 8%         |
| Vitamin C                     | 6%         |
| Iron                          | 8%         |

The % Daily Value (DV) tells you how much a nutrient in a serving of food contributes to a daily diet. 2,000 calories a day is used for general nutrition advice.

**INGREDIENTS:** WATER, WHEAT FLOUR (ENRICHED WITH NIACIN, REDUCED IRON, THIAMIN MONONITRATE, RIBOFLAVIN, FOLIC ACID), MOZZARELLA CHEESE (WHOLE MILK, BACTERIAL CULTURE, SALT, MICROBIAL ENZYME), REDUCED FAT MOZZARELLA CHEESE PRODUCT (PASTEURIZED PART SKIM MILK, NONFAT MILK, MODIFIED FOOD STARCH, BACTERIAL CULTURE, SALT, VITAMIN A PALMITATE, MICROBIAL ENZYME), PEPPERONI (PORK, SALT, WATER, DEXTROSE, SPICES, LACTIC ACID STARTER CULTURE, SODIUM ASCORBATE, OLEORESIN OF PAPRIKA, FLAVOR, CITRIC ACID, GARLIC POWDER, SODIUM NITRITE), TOMATO PASTE (TOMATOES), VEGETABLE OIL (SOYBEAN AND/OR CANOLA AND/OR CORN), BATTER MIX (BLEACHED ENRICHED FLOUR (ENRICHED WITH NIACIN, REDUCED IRON, THIAMIN MONONITRATE, RIBOFLAVIN, FOLIC ACID), MODIFIED CORNSTARCH, DEXTROSE, YELLOW CORN FLOUR, SALT, DEHYDRATED PARMESAN CHEESE (MILK, BACTERIAL CULTURE, SALT, MICROBIAL ENZYME), SPICES, GARLIC AND ONION POWDER, DISODIUM PHOSPHATE), MALTODEXTRIN, DEXTROSE, MODIFIED CORN STARCH, SALT, SPICES, FLAVOR, DOUGH CONDITIONERS (YEAST, WHEAT GLUTEN, SUGAR, GUAR GUM, MODIFIED FOOD STARCH, SODIUM METABISULPHITE).

**CONTAINS: WHEAT AND MILK**

Distributed by:  
Holiday Stationstores, LLC  
Minneapolis, MN 55437  
holidaystationstores.com



# Pork & Vegetable Egg Roll

Contains 1 Egg Roll

## Nutrition Facts

1 serving per container  
Serving size 1 piece (85g)

Amount per serving  
**Calories 180**

|                               | % Daily Value* |
|-------------------------------|----------------|
| <b>Total Fat</b> 9g           | <b>11%</b>     |
| Saturated Fat 2.5g            | <b>13%</b>     |
| <b>Cholesterol</b> 10mg       | <b>4%</b>      |
| <b>Sodium</b> 480mg           | <b>21%</b>     |
| <b>Total Carbohydrate</b> 19g | <b>7%</b>      |
| Dietary Fiber 2g              | <b>7%</b>      |
| Sugars 3g                     |                |
| <b>Protein</b> 7g             |                |
| Vitamin A                     | 4%             |
| Vitamin C                     | 8%             |
| Calcium                       | 4%             |
| Iron                          | 8%             |

\*The % Daily Value (DV) tells you how much a nutrient in a serving of food contributes to a daily diet. 2,000 calories a day is used for general nutrition advice.

**INGREDIENTS:** CABBAGE, ENRICHED FLOUR (BLEACHED WHEAT FLOUR, NIACIN, REDUCED IRON, THIAMINE MONONITRATE, RIBOFLAVIN, FOLIC ACID), CALCIUM PROPIONATE, MALTED BARLEY FLOUR, PORK, WATER, CARROTS, CELERY, TEXTURED SOY PROTEIN (TEXTURED SOY FLOUR, ZINC OXIDE, NIACINAMIDE, FERROUS SULFATE, COPPER GLUCONATE, VITAMIN A PALMITATE, CALCIUM PANTOTHENATE, THIAMINE MONONITRATE [VITAMIN B1], PYRIDOXINE HYDROCHLORIDE [VITAMIN B6], RIBOFLAVIN [VITAMIN B2], CYANOCOBALAMIN [VITAMIN B12]), ONION, ENRICHED DURUM FLOUR (WHEAT FLOUR, NIACIN, FERROUS SULFATE, THIAMINE MONONITRATE, RIBOFLAVIN, FOLIC ACID). CONTAINS 2% OR LESS OF: SALT, SUGAR, FISH SAUCE (ANCHOVY FISH EXTRACT, SALT, SUGAR), MONOSODIUM GLUTAMATE, VEGETABLE OIL (COTTONSEED AND/OR CANOLA OIL), WHEAT GLUTEN, SPICE, EGGS, CORNSTARCH, FRIED IN VEGETABLE OIL (COTTONSEED AND/OR CANOLA OIL).  
**CONTAINS: EGGS, WHEAT, SOY, FISH PROTEIN AND MSG.**

Distributed by:  
Holiday Stationstores, LLC  
Minneapolis, MN 55437  
holidaystationstores.com



0 41282 10746 9

# Egg & Sausage Taquitos

Contains 1 Taquito

## Nutrition Facts

1 serving per container

Serving size 1 piece (85g)

Amount per serving

**Calories 190**

% Daily Value\*

|                               |            |
|-------------------------------|------------|
| <b>Total Fat</b> 9g           | <b>14%</b> |
| Saturated Fat 2g              | <b>10%</b> |
| <b>Cholesterol</b> 30mg       | <b>10%</b> |
| <b>Sodium</b> 290mg           | <b>12%</b> |
| <b>Total Carbohydrate</b> 22g | <b>7%</b>  |
| Dietary Fiber 1g              | <b>4%</b>  |
| Sugars 1g                     |            |
| <b>Protein</b> 6g             |            |
| Vitamin A                     | 2%         |
| Calcium                       | 4%         |
| Vitamin C                     | 0%         |
| Iron                          | 8%         |

The % Daily Value (DV) tells you how much a nutrient in a serving of food contributes to a daily diet. 2,000 calories a day is used for general nutrition advice.

**INGREDIENTS:** WATER, WHEAT FLOUR (ENRICHED WITH NIACIN, REDUCED IRON, THIAMIN MONONITRATE, RIBOFLAVIN, FOLIC ACID), SCRAMBLED EGG PRODUCT (LIQUID WHOLE EGGS, SKIM MILK, MODIFIED CORNSTARCH, SALT, XANTHAN GUM, CITRIC ACID, PEPPER AND/OR LIQUID PEPPER), COOKED SALISAGE (PORK, WATER, SALT, SPICES, CORN SYRUP SOLIDS, SUGAR, AUTOLYZED YEAST EXTRACT, SPICE EXTRACTIVE), VEGETABLE OIL (SOYBEAN AND/OR CANOLA AND/OR CORN OIL), BATTER MIX (ENRICHED WHEAT FLOUR [ENRICHED WITH NIACIN, REDUCED IRON, THIAMINE MONONITRATE, RIBOFLAVIN, FOLIC ACID], YELLOW CORN FLOUR, SPICES, SALT, JALAPENO PEPPER, BAKING POWDER, GUAR GUM, OLEORESIN PAPRIKA AND TURMERIC, NATURAL FLAVOR), TOMATOES (TOMATOES, TOMATO JUICE, CITRIC ACID, CALCIUM CHLORIDE), PROCESSED CHEDDAR CHEESE PRODUCT (WATER, PALM OIL, CHEESE (MILK, BACTERIAL CULTURE, SALT, MICROBIAL ENZYME), CASEIN, MODIFIED POTATO STARCH, SODIUM PHOSPHATES, SALT, LACTIC ACID, NATURAL FLAVOR, ANNATTO), MONTEREY JACK CHEESE (MILK, BACTERIAL CULTURE, SALT, MICROBIAL ENZYME), MALTODEXTRIN, GREEN CHILI PEPPERS (WITH SALT, CITRIC ACID, CALCIUM CHLORIDE), MODIFIED CORNSTARCH, DEXTROSE, SALT, LACTIC ACID, DEHYDRATED ONION, CHEDDAR FLAVOR (CORN SYRUP SOLIDS, CHEDDAR CHEESE (MILK, BACTERIAL CULTURE, SALT, MICROBIAL ENZYME), SALT, YEAST EXTRACT, DISODIUM PHOSPHATE, NATURAL FLAVORS, ANNATTO), SPICES, CHICKEN FLAVOR (SALT, YEAST EXTRACT, MALTODEXTRIN, SUNFLOWER OIL, NATURAL FLAVOR, TURMERIC EXTRACT), DOUGH CONDITIONERS (YEAST, WHEAT GLUTEN, SUGAR, GUAR GUM, MODIFIED POTATO STARCH, SODIUM METABISULPHITE).  
**CONTAINS: EGG, WHEAT, MILK**

Distributed by:  
Holiday Stationstores, LLC  
Minneapolis, MN 55437  
holidaystationstores.com



# Crispy Chicken Tenderstix

Contains 1 Tenderstix

## Nutrition Facts

1 serving per container

**Serving size 1 piece (82g)**

**Amount per serving**

**Calories 180**

|                               | <b>% Daily Value*</b> |
|-------------------------------|-----------------------|
| <b>Total Fat</b> 9g           | <b>14%</b>            |
| Saturated Fat 3g              | <b>15%</b>            |
| <b>Cholesterol</b> 45mg       | <b>15%</b>            |
| <b>Sodium</b> 480mg           | <b>20%</b>            |
| <b>Total Carbohydrate</b> 11g | <b>4%</b>             |
| Dietary Fiber 0g              | <b>0%</b>             |
| Sugars 1g                     |                       |
| <b>Protein</b> 14g            |                       |
| Vitamin A                     | 2%                    |
| Vitamin C                     | 0%                    |
| Calcium                       | 10%                   |
| Iron                          | 6%                    |

The % Daily Value (DV) tells you how much a nutrient in a serving of food contributes to a daily diet. 2,000 calories a day is used for general nutrition advice.

**INGREDIENTS:** CHICKEN, BREADING (WHEAT ENRICHED AND BLEACHED ENRICHED FLOUR (WHEAT FLOUR, NIACIN, REDUCED IRON, THIAMINE MONONITRATE, RIBOFLAVIN, FOLIC ACID), SALT, DEXTRIN, MODIFIED FOOD STARCH, SUGAR, NATURAL FLAVORS, SOYBEAN OIL, YEAST, SPICE, LEAVENING (SODIUM ACID PYROPHOSPHATE, SODIUM BICARBONATE, MONOCALCIUM PHOSPHATE), GUAR GUM, XANTHAN GUM), WATER, PASTEURIZED PROCESSED MONTEREY JACK AND SWISS CHEESE (MONTEREY JACK CHEESE AND SWISS CHEESE (MILK, CHEESE CULTURE, SALT, ENZYMES), WATER, CREAM, SODIUM PHOSPHATE, SALT, SORBIC ACID (PRESERVATIVE), ARTIFICIAL COLOR), SOYBEAN OIL, LESS THAN 2% OF: ANNATTO, BLUE CHEESE (MILK, CHEESE CULTURE, SALT, ENZYMES), CITRIC ACID, CHEDDAR CHEESE (MILK, CHEESE CULTURE, SALT, ENZYMES), CORN SYRUP SOLIDS, DEXTROSE, GARLIC POWDER, GUAR GUM, HYDROLYZED SOY AND WHEAT PROTEIN, LACTIC ACID, MALTODEXTRIN, MODIFIED CORNSTARCH, NATURAL FLAVOR, NONFAT MILK SOLIDS, ONION POWDER, POTASSIUM SORBATE AND SODIUM BENZOATE (PRESERVATIVES), SALT, SODIUM PHOSPHATE, SOY PROTEIN ISOLATE, SUNFLOWER OIL, WHEY, XANTHAN GUM  
**CONTAINS: MILK, SOY, WHEAT**

Distributed by:  
Holiday Stationstores, LLC  
Minneapolis, MN 55437  
holidaystationstores.com



0 36669 46441 9

**Maximo Oval Hash Brown Patties**  
**Item: W7981**  
Frozen as Sold

| <b>Nutrition Facts</b>   |                      |
|--|----------------------|
| about 188 servings per container   |                      |
| <b>Serving size</b>  | <b>1 patty (72g)</b> |
| <b>Amount per serving</b>  |                      |
| <b>Calories</b>  | <b>130</b>           |
| <b>% Daily Value*</b>  |                      |
| <b>Total Fat</b> 6g  | <b>8%</b>            |
| Saturated Fat 1.5g   | <b>8%</b>            |
| Trans Fat 0g   |                      |
| <b>Cholesterol</b> 0mg   | <b>0%</b>            |
| <b>Sodium</b> 340mg  | <b>15%</b>           |
| <b>Total Carbohydrate</b> 15g  | <b>5%</b>            |
| Dietary Fiber 1g   | <b>4%</b>            |
| Total Sugars less than 1g  |                      |
| Includes 0g Added Sugars   | <b>0%</b>            |
| <b>Protein</b> 2g  |                      |
| Vitamin D 0mcg   | 0%                   |
| Calcium 10mg   | 0%                   |
| Iron 0mg   | 0%                   |
| Potassium 240mg  | 6%                   |
| <small>*The % Daily Value tells you how much a nutrient in a serving of food contributes to a daily diet. 2,000 calories a day is used for general nutrition advice.</small> |                      |

5295 W7981 COA 49022972-0

This information is correct as of April 2025 unless otherwise stated. Changes in supply sources, regional and seasonal variations, and periodic changes in product formulation may affect stated nutrition values. The information is the confidential and proprietary property of Lamb Weston Holdings, Inc. It shall not be disclosed, copied or distributed to any other organization or individual without the written consent of Lamb Weston.

# Apple Pie

## Nutrition Facts

1 serving per container

**Serving size** 1 pie (86g)

**Amount per serving**

**Calories** 220

**% Daily Value\***

**Total Fat** 8g 10%

Saturated Fat 4g 20%

Trans Fat 0g

**Cholesterol** 0mg 0%

**Sodium** 230mg 10%

**Total Carbohydrate** 37g 13%

Dietary Fiber 1g 4%

Total Sugars 14g

Includes 12g Added Sugars 24%

**Protein** 3g

Vitamin D 1.6mcg 8%

Calcium 20mg 2%

Iron 1.3mg 8%

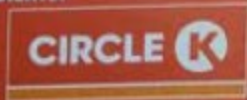
Potassium 60mg 2%

The % Daily Value (DV) tells you how much a nutrient in a serving of food contributes to a daily diet. 2,000 calories a day is used for general nutrition advice.

**INGREDIENTS:** WATER, ENRICHED WHEAT FLOUR (WHEAT FLOUR, NIACIN, REDUCED IRON, THIAMINE MONONITRATE, RIBOFLAVIN, FOLIC ACID), APPLES (APPLES, SALT, ASCORBIC ACID, CITRIC ACID), PALM OIL, SUGAR, BROWN SUGAR, FOOD STARCH - MODIFIED, CONTAINS 2% OR LESS OF THE FOLLOWING: SOY FLOUR, SALT, APPLE JUICE CONCENTRATE, CINNAMON, LEMON JUICE CONCENTRATE, SODIUM ACID PYROPHOSPHATE, NATURAL AND ARTIFICIAL FLAVOR, BAKING SODA, DEXTROSE, DOUGH CONDITIONER BLEND (CALCIUM SULFATE, SODIUM METABISULFITE [PRESERVATIVE], CALCIUM PHOSPHATE), GUAR GUM.

**CONTAINS SOY, WHEAT.**

**CONTAINS BIOENGINEERED FOOD INGREDIENTS.**



600-1386

# Bavarian Pretzel

## Nutrition Facts

Serving Size: 1 Pretzel (159g)  
Servings Per Container: 1

Amount Per Serving

**Calories 460** Calories from Fat 60

% Daily Value\*

|                               |              |
|-------------------------------|--------------|
| <b>Total Fat</b> 7g           | <b>11%</b>   |
| Saturated Fat 3g              | <b>15%</b>   |
| <i>Trans</i> Fat 0g           |              |
| <b>Cholesterol</b> 0mg        | <b>0%</b>    |
| <b>Sodium</b> 1270mg          | <b>53%</b>   |
| <b>Total Carbohydrate</b> 84g | <b>28%</b>   |
| Dietary Fiber 6g              | <b>24%</b>   |
| Sugars 13g                    |              |
| <b>Protein</b> 14g            |              |
| Vitamin A 0%                  | Vitamin C 0% |
| Calcium 4%                    | Iron 35%     |

\*Percent Daily Values are based on a 2,000 calorie diet.



Distributed by:  
Holiday Stationstores, Inc.  
Minneapolis, MN 55437  
[holidaystationstores.com](http://holidaystationstores.com)

**INGREDIENTS:** PRETZEL: Enriched Bleached Wheat Flour (bleached wheat flour, malted barley flour, niacin, reduced iron, thiamine mononitrate, riboflavin, folic acid), Water, Brown Sugar, Vegetable Shortening (palm oil), Yeast, White Vinegar, Salt, Malt, Bicarbonates and Carbonates of Soda. BASTING SPRAY: Conola Oil, Palm Oil, Coconut Oil, Lecithin from Soybeans, Dimethyl Silicone (for anti-foaming), Annatto (color) Natural Flavor (milk).  
**CONTAINS WHEAT, MILK, SOY**

# Nacho Cheese

